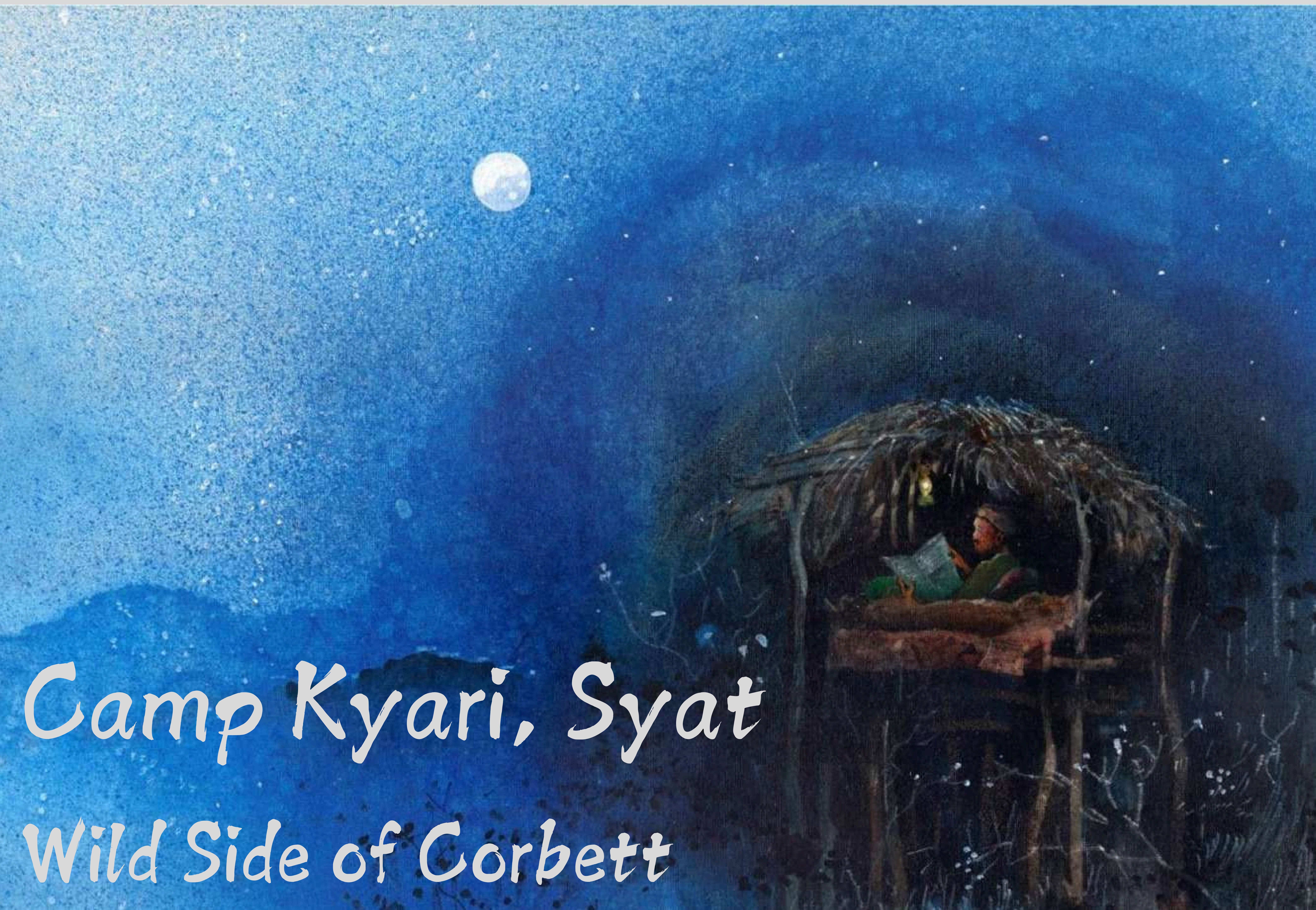


# Birding in country side of Corbett



Camp Kyari, Syat  
Wild Side of Corbett

# The Place



Camp Kyari, Syat is located in the Shivalik foothills in Nainital district of Uttarakhand. Syat village is located at the head of the Kota Doon valley in the Corbett landscape.

The unique geographical features of the Kota doon makes it a very fertile area besides endowing it with a rich bird and wildlife. The camp, which is bordered by a thick sal forest, gives ample opportunity to study the wild side of the Himalayan Terai.

Since the camp is run by the youth of the local community, interactions with the local communities are more meaningful.

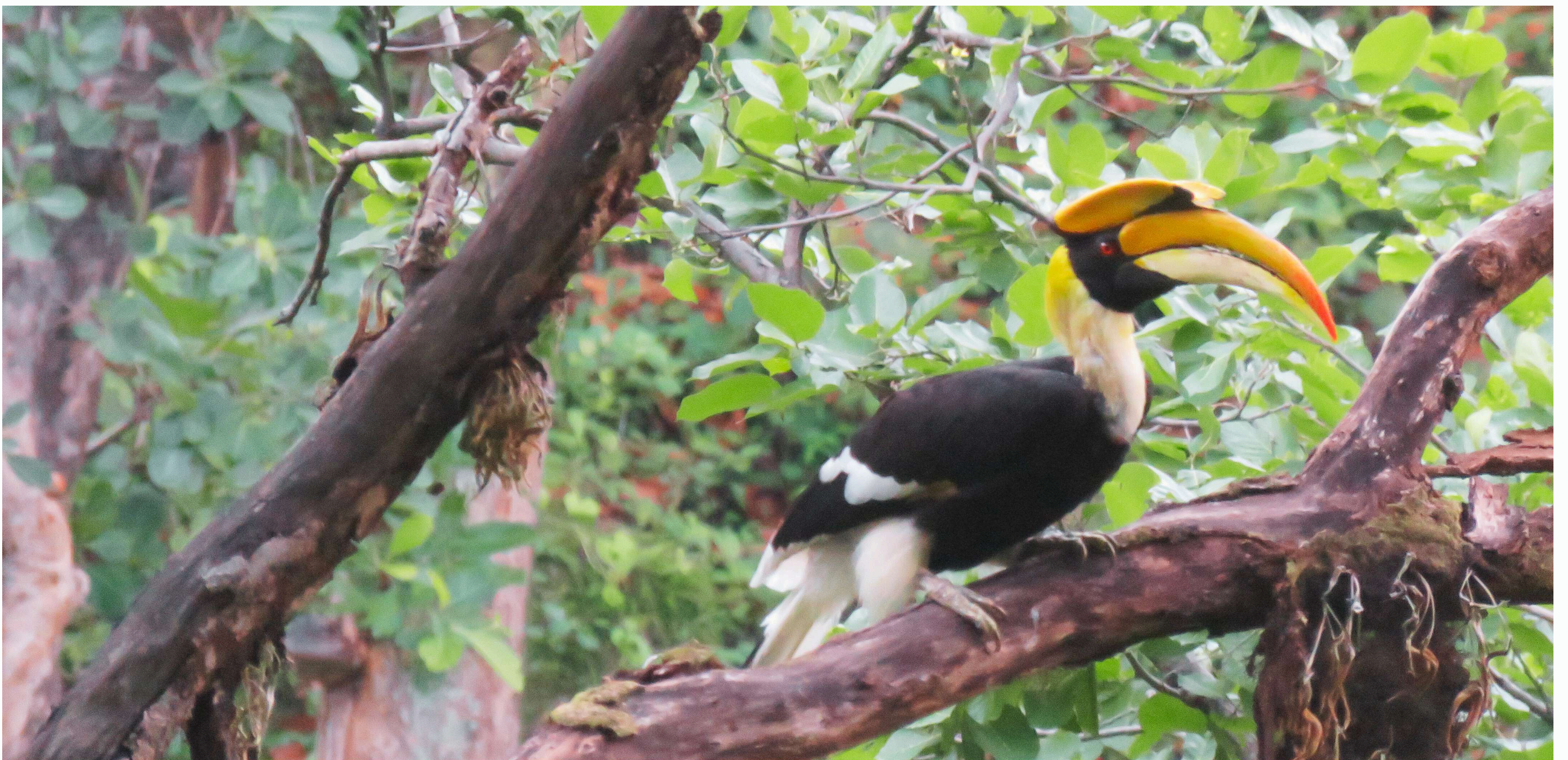
Geographic cycling expeditions can be undertaken in the Kotadoon valley, while a trek along the river to a cool pool gives the feel of treading in untamed country.

Camping out in the wilderness in the one-home village above Syat, exploring ancient village technologies and the local culture and people.

# Day 1

## Hornbill trail

Explore woodland birds, woodpeckers, thrushes, and barbets, including the highly endangered and charismatic Great Hornbill, through dance forest.



# Chalkiya trail

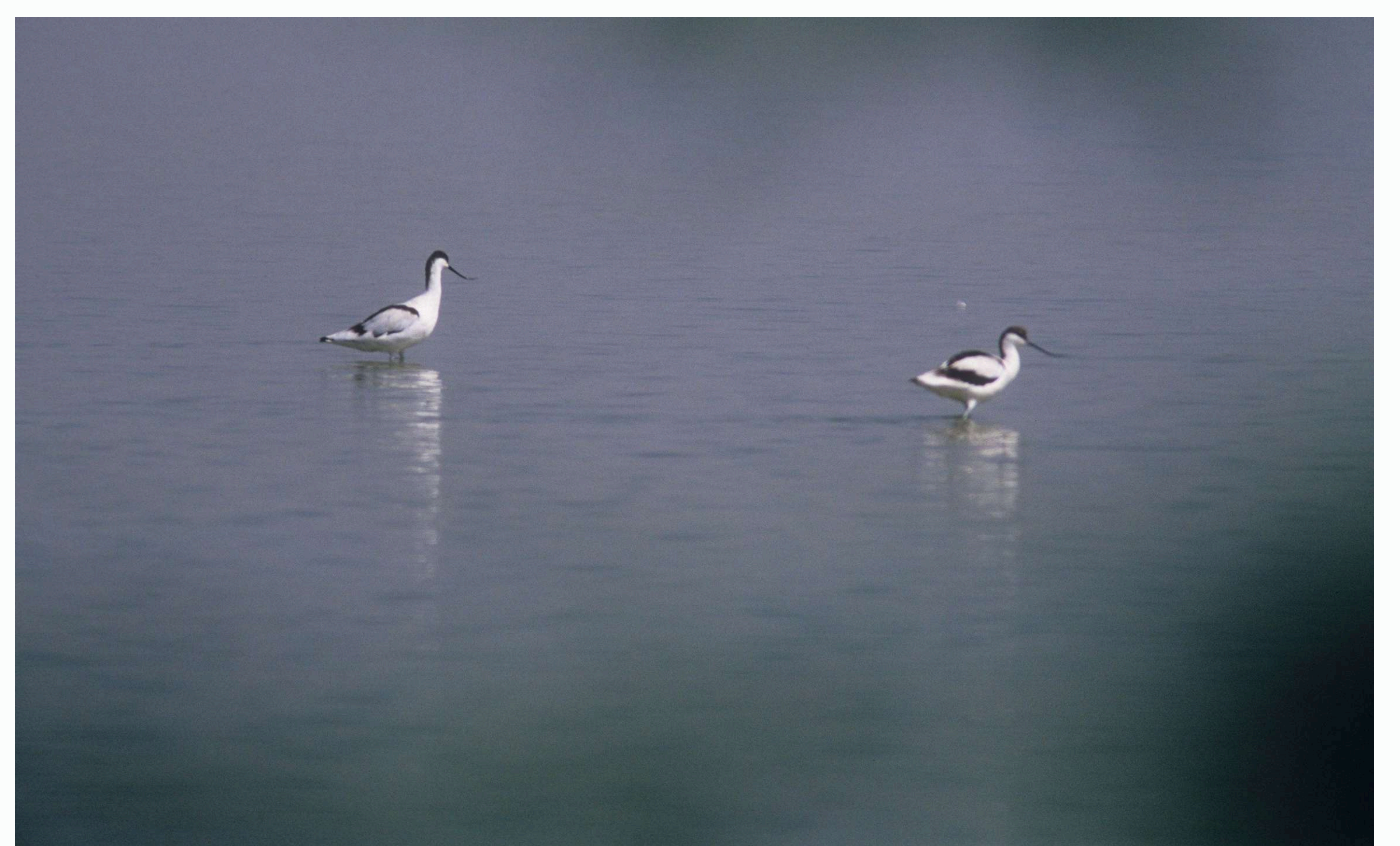
Experience the synergy between forest, Himalayan village, and birdlife. Let Sunbirds, Leafbirds, and Munias guide you to the glistening Baur River. Create your water activity and lunch while hunting for wildlife presence.



# Day 2

## Haripura Dam

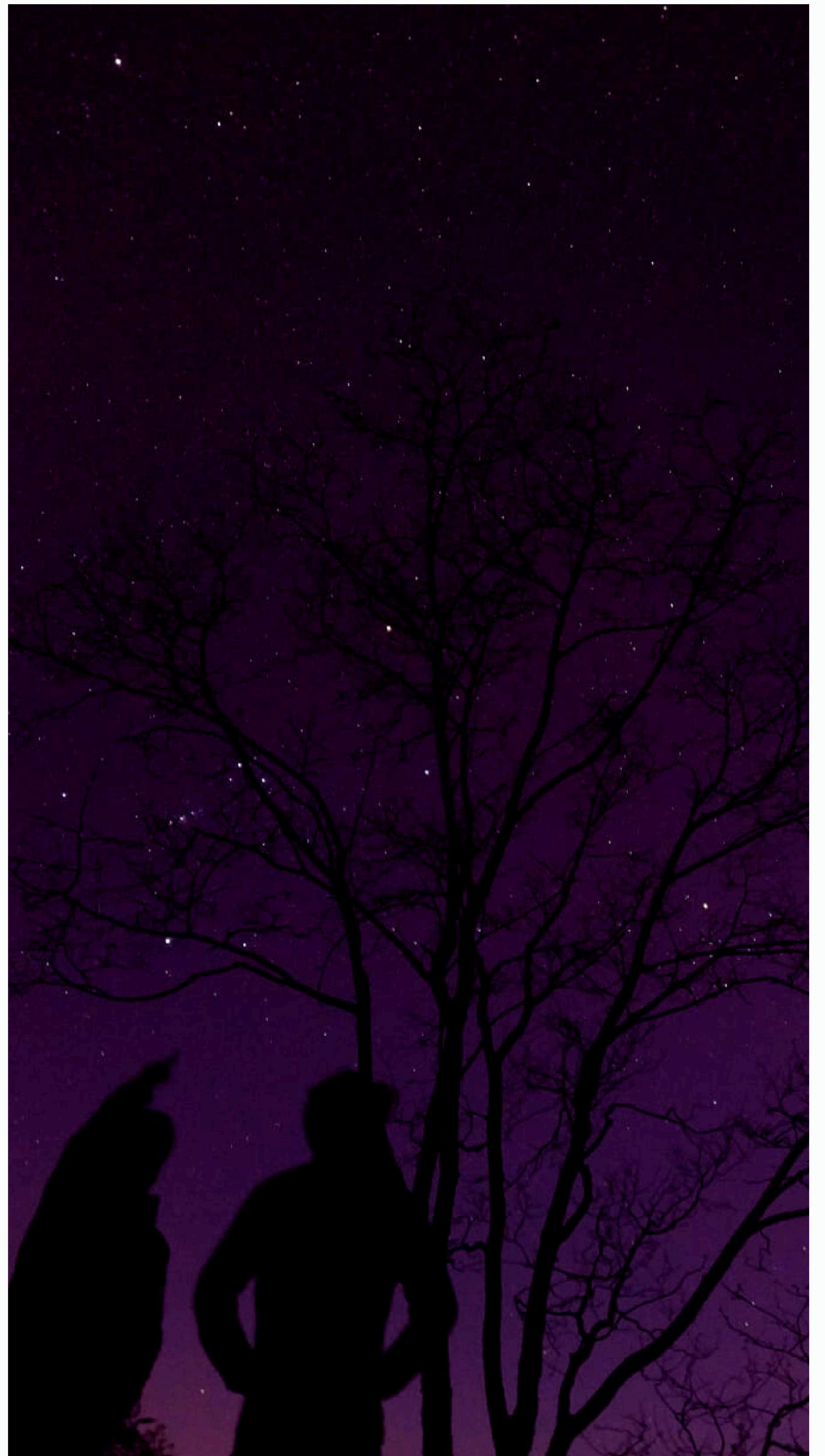
Take a ballistic morning Jeep ride to Haripura Dam to become part of the annual bird migration and understand the behavior of wetland birds, ducks, geese, and storks.



Refresh with local fish curry and rice for water adventure activities.

## *Night walk*

Open all senses in the forest's darkness and enjoy the hooting of one of the majestic Indian owls and the red eyes of Nightjar.



# Mountain Biking

Wake up with a morning bike ride to Degoan village with thrilling slopes downhill. Enjoy the flocks of Himalayan farmland birds.





**Cost – RS.9,950/- + 5% GST (All inclusive)**

**Includes:**

- Facilitation of the programme as per itinerary.
- Accommodation. All meals during the
- program. Instructors, safety equipment.
- Sleeping bags, mattresses etc as required.
- Back up vehicles during the programme.
- 

**Does not Include:**

- Road Transport from and to the Station / bus stop / airport  
(Can be arranged at actuals)
- Personal expenses.
- Train- Bus- flight tickets from Delhi – Delhi.



# Logistics and Accommodation

Twin/triple/Quad sharing basis in Machaans, Huts & American Safari Tents along with comfortable bedding. Both cots and ground bedding could be arranged on request. Hygienic toilet with w/c and running water flushes are also provided. Lounging chairs and campfire stools blending with the natural environment are interspersed at the campsite. Maintaining the natural jungle environment no electricity is used at the camp. Kerosene/solar lanterns are used to light the camp adequately during the night.

## Food

The camp kitchen provides wholesome and fresh Indian/Continental cuisine along-with local delicacies. We ensure that the children enjoy the meals and the menu generally is planned keeping in mind the children sensibilities and nutrition. Milk/Tea/coffee/juices are served at regular intervals. The camp will provide safe drinking RO water.

# Things to be carried

- Basic comfortable clothing like shorts, T-shirts, Track pants, Sweat-shirts, etc
- Personnel toiletries and towel.
- One warm sweater and a warm (pref. rain proof) jacket. Dry fit wear for water based action.
- Comfortable walking/trekking shoes and slippers for lounging at camp and near water areas.(no new shoes or sandals)
- Water bottle.(mandatory)
- Torch with extra pair of batteries (mandatory).
- One writing pad and a pen.
- Caps, binoculars, sunglasses etc. are recommended.
- One small Backpack / daypack to carry stuff while on short walks.
- Books on wildlife, plants and birds are helpful for the nature and wildlife enthusiasts.
- Travel light and pack everything in a rucksack / handbag which can easily be carried by you.

Keeping in view the delicate eco-system around, playing music systems is not allowed at the camps.